



georgia
memory net



clarity.
care.
community.

GEORGIA MEMORY NET is a statewide program dedicated to supporting Primary Care Practices by providing fast and accurate diagnosis of Alzheimer's disease and related dementias. Georgia Memory Net is supported by the Georgia Department of Human Services and managed by the Goizueta Alzheimer's Disease Research Center at Emory University.

The Need for Georgia Memory Net Is Clear.

The numbers don't lie; the citizens and healthcare professionals of Georgia need Georgia Memory Net.

46%

Increase in
Alzheimer's by
2025—more than
any other state



385k

have self-reported
cognitive impairment

80%

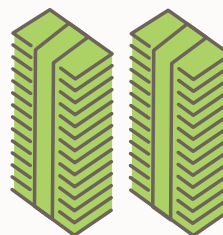
have not yet been
evaluated or treated



6 Year Average
Delay In
Memory-loss
Diagnosis

\$5B

In Preventable
Admissions
Expenses



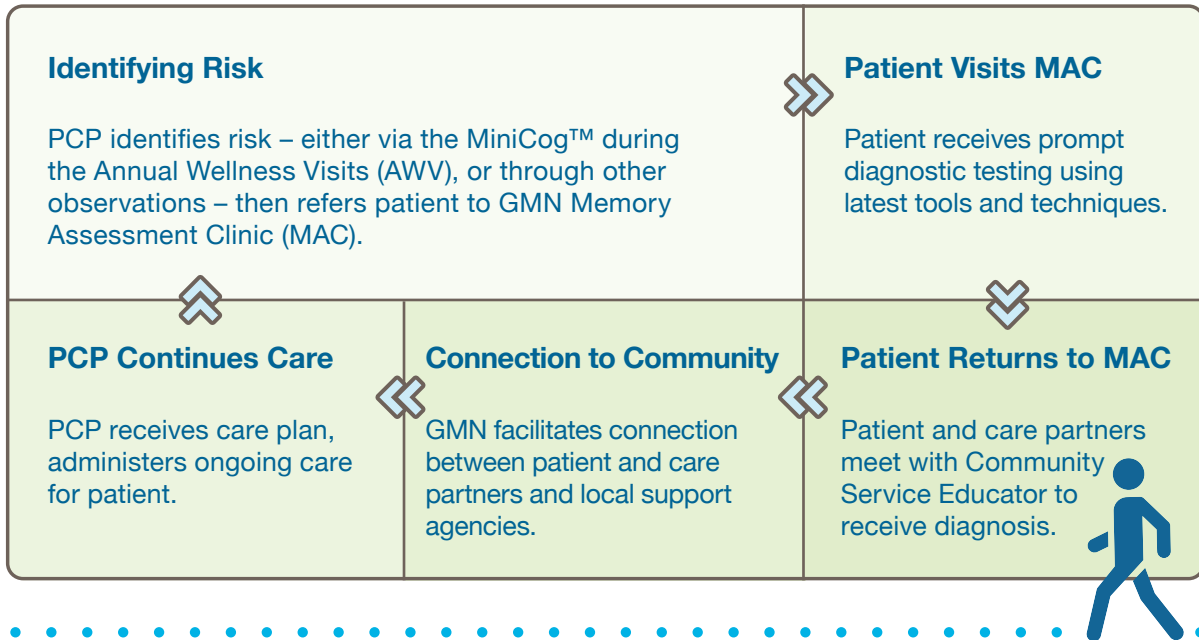
HERE FOR YOU

Georgia Memory Net Is Here for Practices Like Yours

Georgia Memory Net (GMN) Memory Assessment Clinics (MACs) **take in-depth memory evaluations off the schedules of time-crunched PCPs.**

- » Expert diagnostic assessment by providers trained by Emory University's Goizueta Alzheimer's Disease Research Center and supported by the National Institutes of Health
- » GMN makes your referral process simple; fax or direct secure messaging—no burdensome paperwork or process changes
- » Typical MAC evaluation involves **two appointments**:
 - **Visit 1:** Initial diagnostic assessment
 - **Visit 2:** Patient & care partner meet with Community Service Educator to discuss diagnosis, ongoing care, and community support opportunities
- » After diagnosis, patients are referred back to their PCP with a comprehensive treatment plan
- » Referring providers have access to patient records from the MAC
- » MAC Community Service Educators connect patients and care partners to **local resources in your community**, which may include:
 - Area Agencies on Aging
 - Alzheimer's Association
 - Rosalynn Carter Institute for Caregiving

HOW IT WORKS:

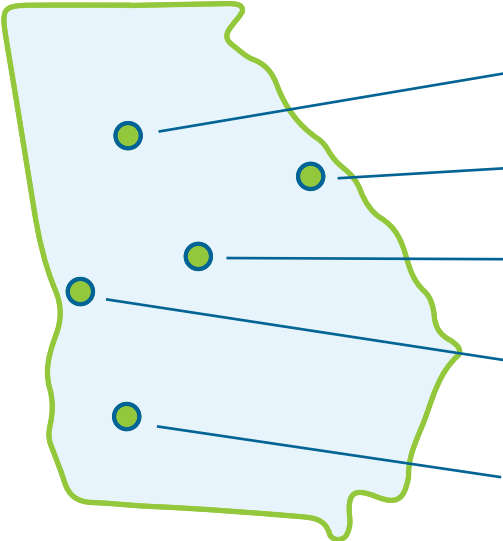




ALL OF GEORGIA

Working to Cover All of Georgia

Our goal is that someday every Georgian will have convenient access to world-class diagnostic centers for Alzheimer’s disease and related dementias. We’re starting with these five strategically-placed locations around the state.



ATLANTA
80 Jesse Hill Jr. Dr. SE, Atlanta, GA 30303
404-616-4567

AUGUSTA
1447 Harper St., Augusta, GA 30912
706-721-2798

MACON
3780 Eisenhower Pkwy., Macon, GA 31206
478-633-5500

COLUMBUS
1800 10th Ave., Columbus, GA 31901
706-571-1120

ALBANY
2336 Dawson Rd., Albany, GA 31707
229-312-8590



TRAINING & OUTREACH

More Ways to Support Your Practice

Georgia Memory Net provides training via conferences, partnerships, and Georgia's Primary Care Advisory Boards. Training topics include:

- **How to conduct and bill for the Annual Wellness Visit* (AWV).** It's an important first step on the road to diagnosis, but some primary care offices conduct very few AWVs.
- **How to care for dementia patients and their families.** Care is more than office visits and medication, and healthcare professionals can help patients find the support they need.
- **Expectations of Primary Care and Memory Assessment Clinics communications.** We can serve Georgians in need better through open and transparent communications.



*ANNUAL WELLNESS VISIT

Every Medicare beneficiary over 65 is eligible for an Annual Wellness Visit—a free appointment with their primary care doctor's office designed to assess risk, create a personalized plan for avoiding future illness, and look for signs of memory loss and cognitive decline. Those signs can lead to a referral to a GMN Memory Assessment Clinic.

Of course, not all referrals will come through an Annual Wellness Visit—physicians could notice signs of memory issues during any visit. The Annual Wellness Visit is a national program funded by Medicare.

IT TAKES A NETWORK. Georgia Memory Net is truly a network:



But the network doesn't work without
Primary Care Practices like yours.



GaMemoryNet.org • info@GaMemoryNet.org