



georgia  
memory net

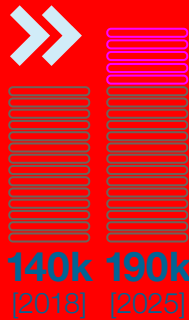
Georgia Memory Net is a statewide program dedicated to the early diagnosis and treatment of Alzheimer's disease and related dementias.

## Establishing the Need:

Know the numbers.

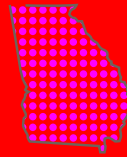
It all adds up:  
The citizens and healthcare professionals of Georgia need the Georgia Memory Net.

People With Alzheimer's Growing:



1.4M

People Over 65 Years Old



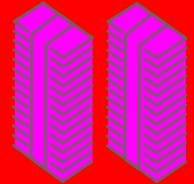
385k  
with self-reported cognitive impairment



6 Year Average Delay in Memory-loss Diagnosis

\$2B

In Preventable Admissions Expenses



## Collaboration is Key:

It takes more than one.

A partnership including academic institutions, community organizations, professional associations, and state networks.



## Setting Our Goals:

It's only a wish without a plan.

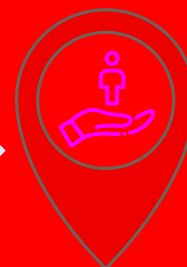
Our objective is to improve outcomes and quality of life for people dealing with memory loss, while streamlining services and offering more efficient care.



Improve Assessment During Annual Wellness Visits



Diagnose Accurately at Memory Assessment Clinics



Improve Care with PCPs and Community Services



Provide Oversight and Evaluation of Performance and Data Collection

## Providing Accessibility:

Launching statewide clinics.

Starting with five clinics in 2018, we hope to have a Memory Assessment Clinic (MAC) convenient to every Georgian in the near future.

## Memory Assessment Clinic Locations



## What to Expect:

Key benefits.

Georgians who make appointments at a MAC, and the doctors who recommend them, benefit from a variety of integrated services.



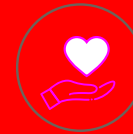
**Trained Clinicians**



**Comprehensive Diagnosis and Care of Planning**



**Community Services Educator**



**Education and Community Support**



**PCP Receives and Manages Care Plan**

Proactive planning and support services  
Expert diagnoses  
Increased caregiving competence and quality of care

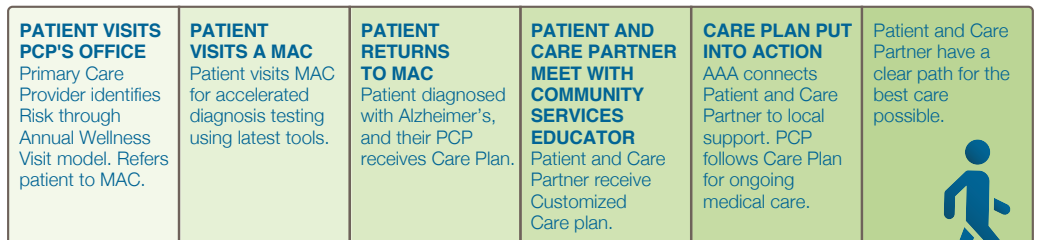
Comprehensive best-practice care plans  
In-depth memory evaluations taken off time-crunched PCPs schedules  
Care plans shared with PCPs, patients and community support

Supported by National Institutes of Health  
Connected to Georgia's only Alzheimer's Disease Research Center

## The Process:

An always integrated path.

Our system is designed for efficiency and convenience to all parties involved.



## GMN for PCPs:

Supporting, not supplanting.

In depth memory evaluations are taken off the schedules of time-crunched PCPs.



Training provided through GMN



Reporting to guide your ongoing care

## Identifying & Referring:

Three simple steps.

If we can manage these three, outcomes could improve.

### ENCOURAGE

Annual Wellness Visits (AWV)



### ADMINISTER

the Mini-Cog™ assessment tool (embedded in the AWV)



### REFER

patient to a Memory Assessment Clinic if Mini-Cog™ indicates an impairment